

FREEHOLD



# 117 BROMFORD DRIVE, BIRMINGHAM, B36 8UY

Asking price

## £225,000

### FEATURES

- LARGE PRIVATE DRIVEWAY
- EXCELLENT INVESTMENT OPPORTUNITY
- SUPERB CONDITION THROUGHOUT
- WALKING DISTANCE TO HODGE HILL SCHOOLS
- NEWLY FITTED DOUBLE GLAZED WINDOWS
- SPACIOUS CORNER PLOT
- PERFECT FOR FIRST TIME BUYERS
- SHORT COMMUTE TO CITY CENTRE



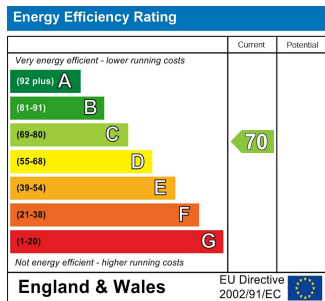
# 3 Bedroom End Terrace House Located In Birmingham

Nestled in the desirable area of Castle Bromwich, Birmingham, this charming end terrace house presents an excellent opportunity for both first-time buyers and savvy investors. Spanning an impressive 829 square feet, the property boasts three well-proportioned bedrooms, making it ideal for families or those seeking extra space.

The inviting reception room offers a warm and welcoming atmosphere, perfect for relaxation or entertaining guests. The house features a modern bathroom, ensuring comfort and convenience for everyday living. One of the standout features of this property is its spacious corner plot, providing ample outdoor space for gardening or leisure activities.

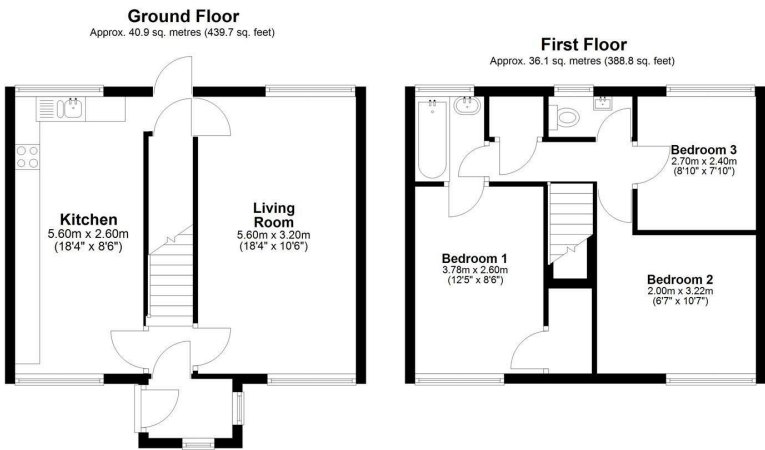
Additionally, the private driveway offers off-road parking, a valuable asset in this bustling area. The newly fitted double glazing throughout enhances energy efficiency and adds to the overall appeal of the home, ensuring a cosy environment all year round.

Built in 1960, this property combines classic charm with modern amenities, making it a fantastic choice for those looking to settle in a vibrant community. With its prime location and attractive features, this end terrace house on Bromford Drive is not to be missed.



Call us on  
**0121 667 0343**  
[hello@swift-property.co.uk](mailto:hello@swift-property.co.uk)  
[www.swift-property.co.uk](http://www.swift-property.co.uk)

**Council Tax Band**  
**A**



Total area: approx. 77.0 sq. metres (828.5 sq. feet)

Agents Note: Whilst every care has been taken to prepare these particulars, they are for guidance purposes only. All measurements are approximate and are for general guidance purposes only and whilst every care has been taken to ensure their accuracy, they should not be relied upon and potential buyers are advised to recheck the measurements.

